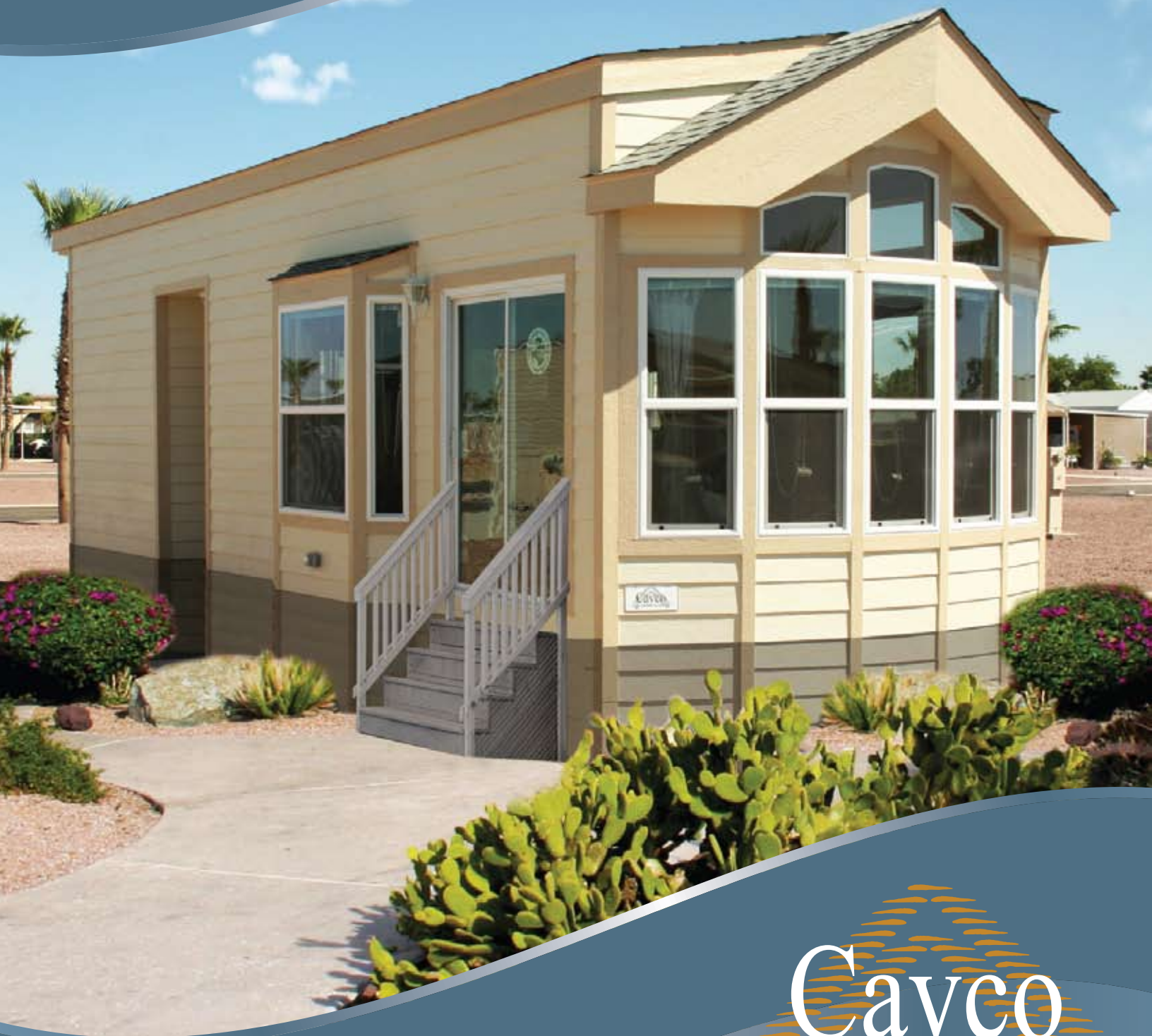


# CATALINA

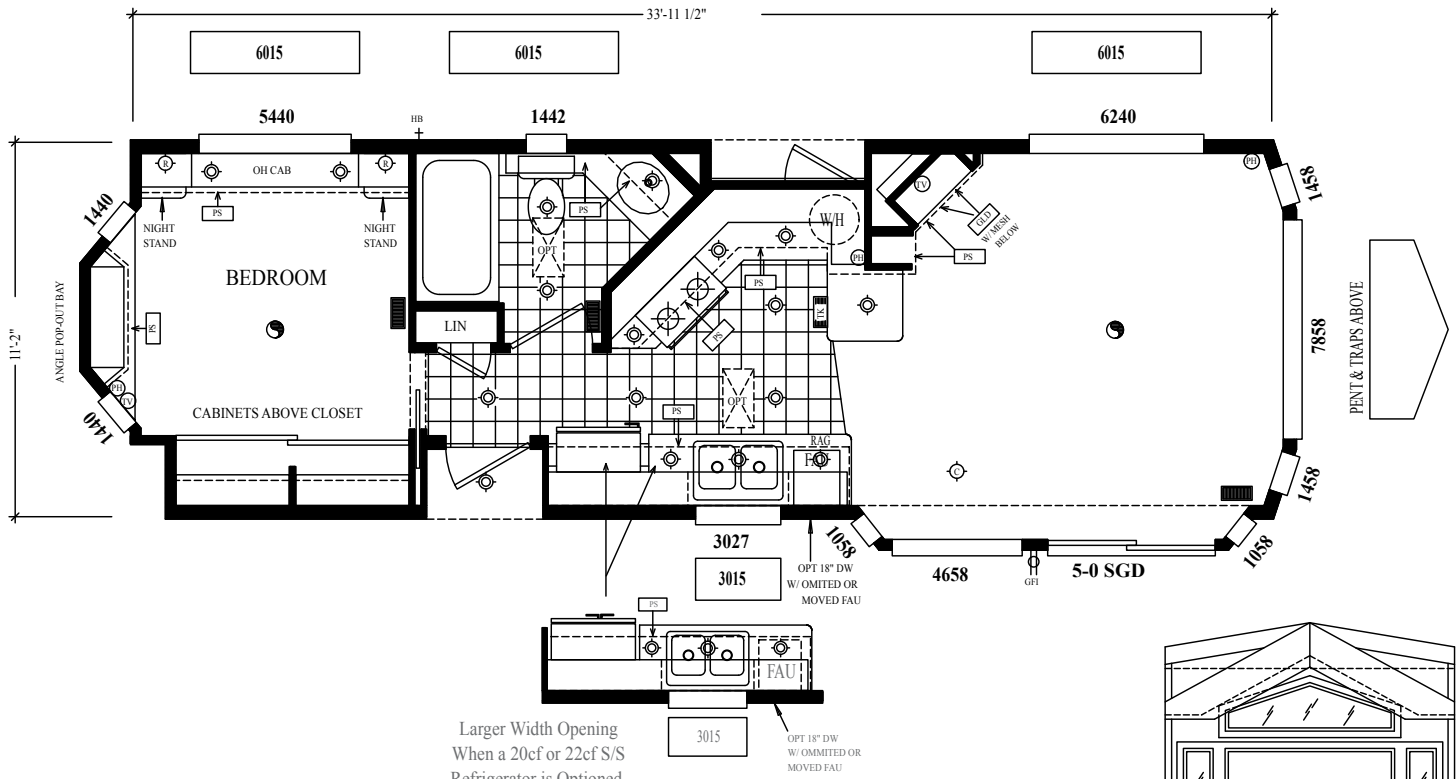
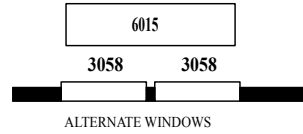
PARK MODELS



[www.cavcoparkhomes.com](http://www.cavcoparkhomes.com)

Cavco  
PARK MODELS™

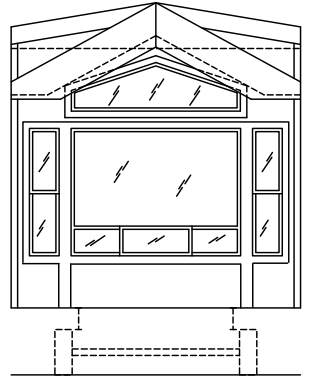
# C-30001-A



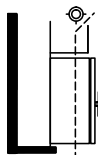
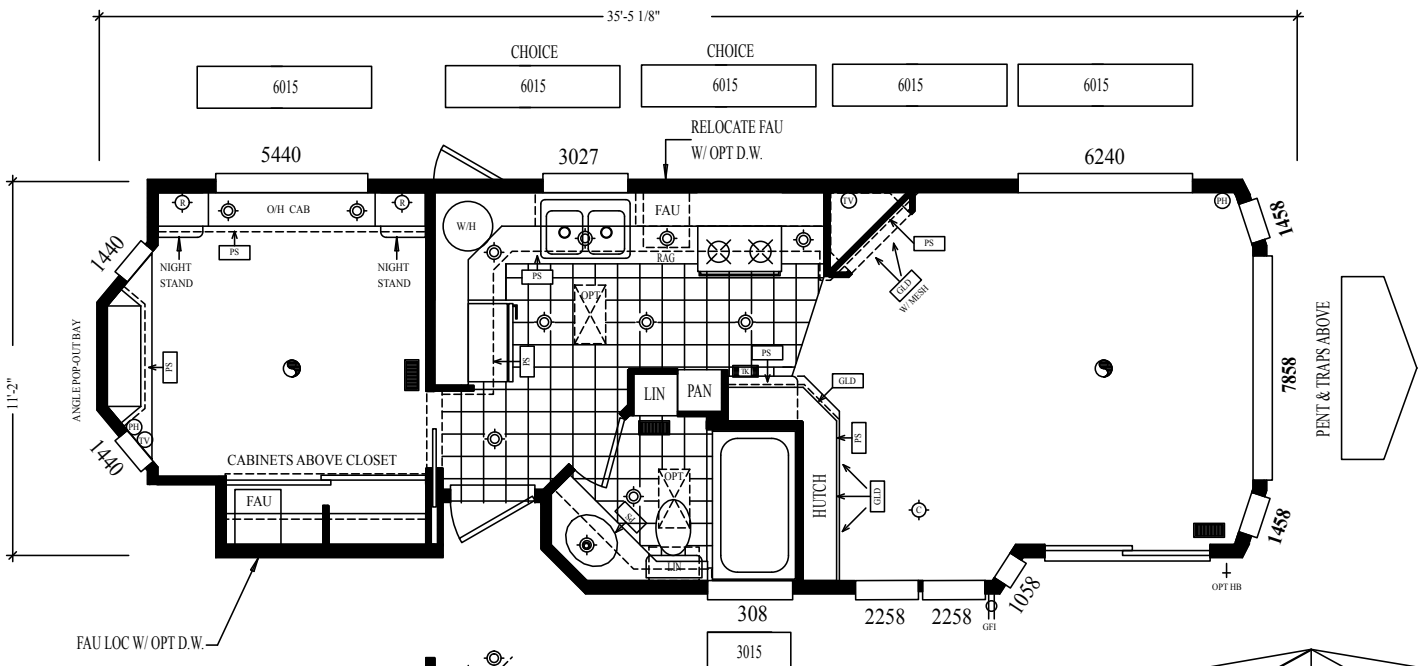
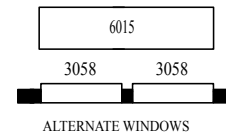
Larger Width Opening  
When a 20cf or 22cf S/S  
Refrigerator is Selected.  
Cabinet Between Refer and  
Kit Sink is Narrower

Catalina Alternate 3000 Series  
Front Elevation

Trusses: L 2/12 - 134  
& CA 6/12 - 134



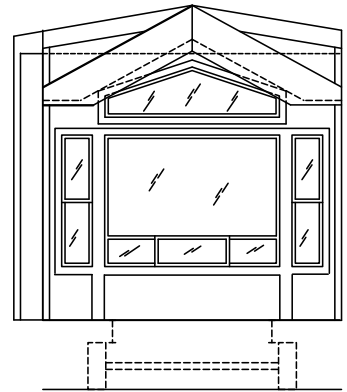
NOTE: REQUIRES FACTORY CAROUSEL MED CAB



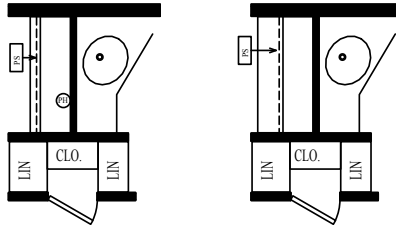
Larger Width Opening  
When a 20cf or 22cf S/S  
Refrigerator is Optioned.

Catalina Alternate 3000 Series  
Front Elevation

Trusses: L 2/12 - 147  
& CA 6/12 - 134

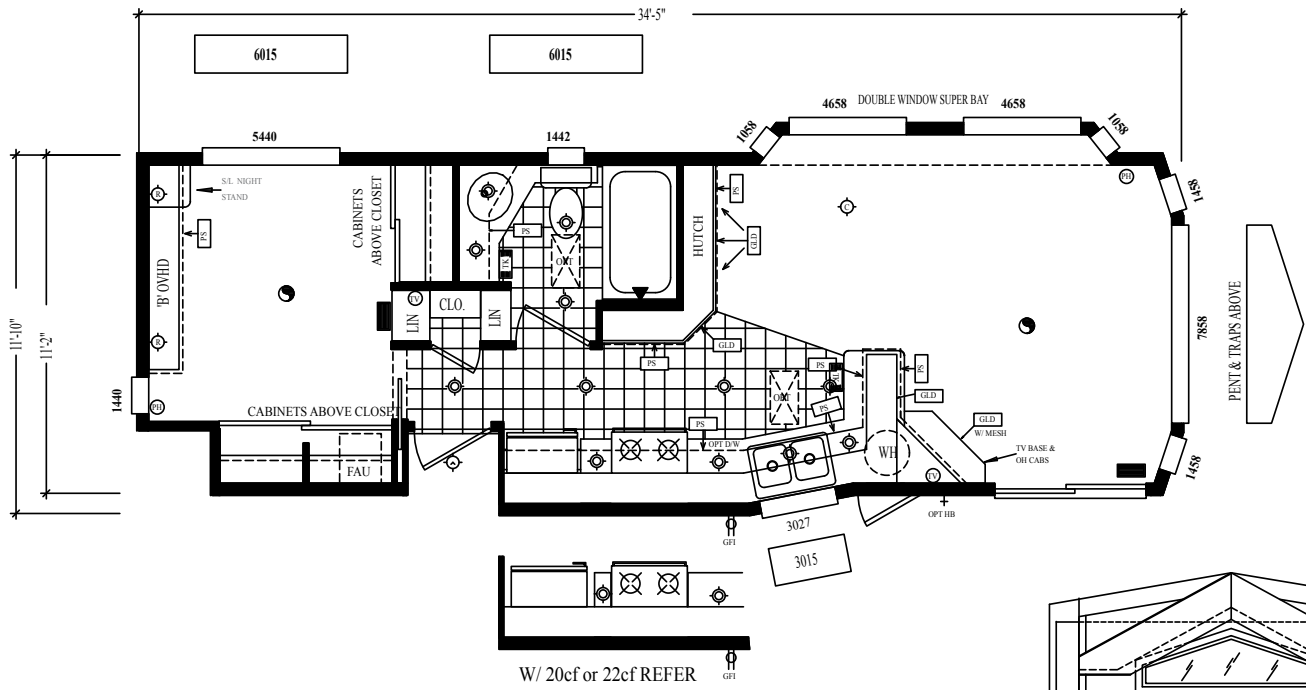


# C-30001-G



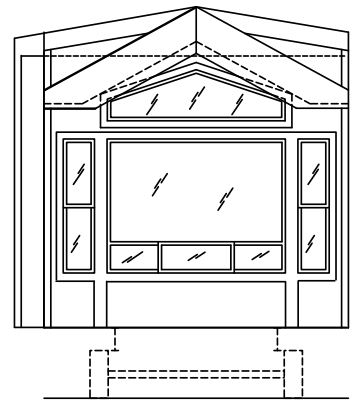
ALT DESK & OH

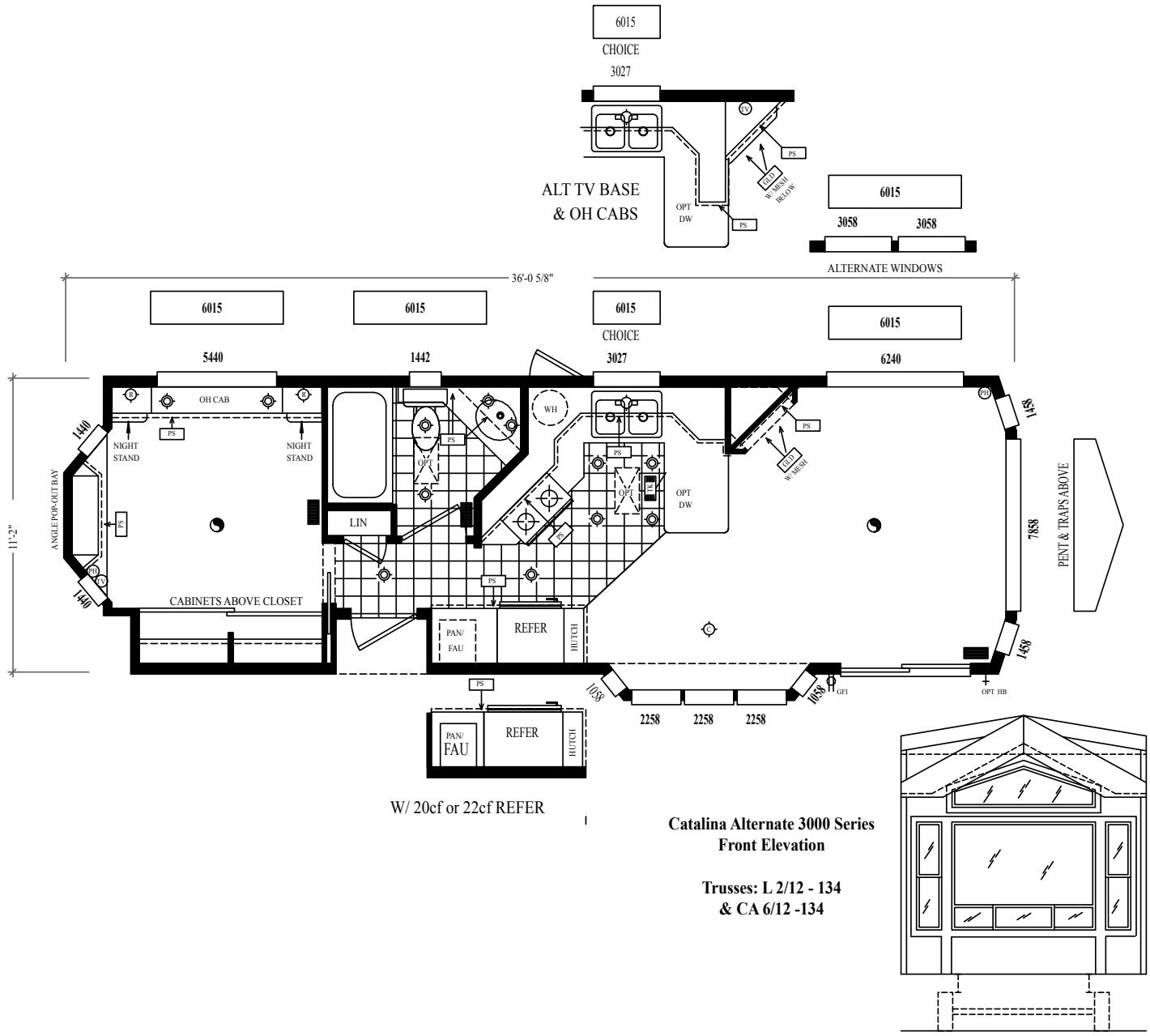
ALT BASE & OH



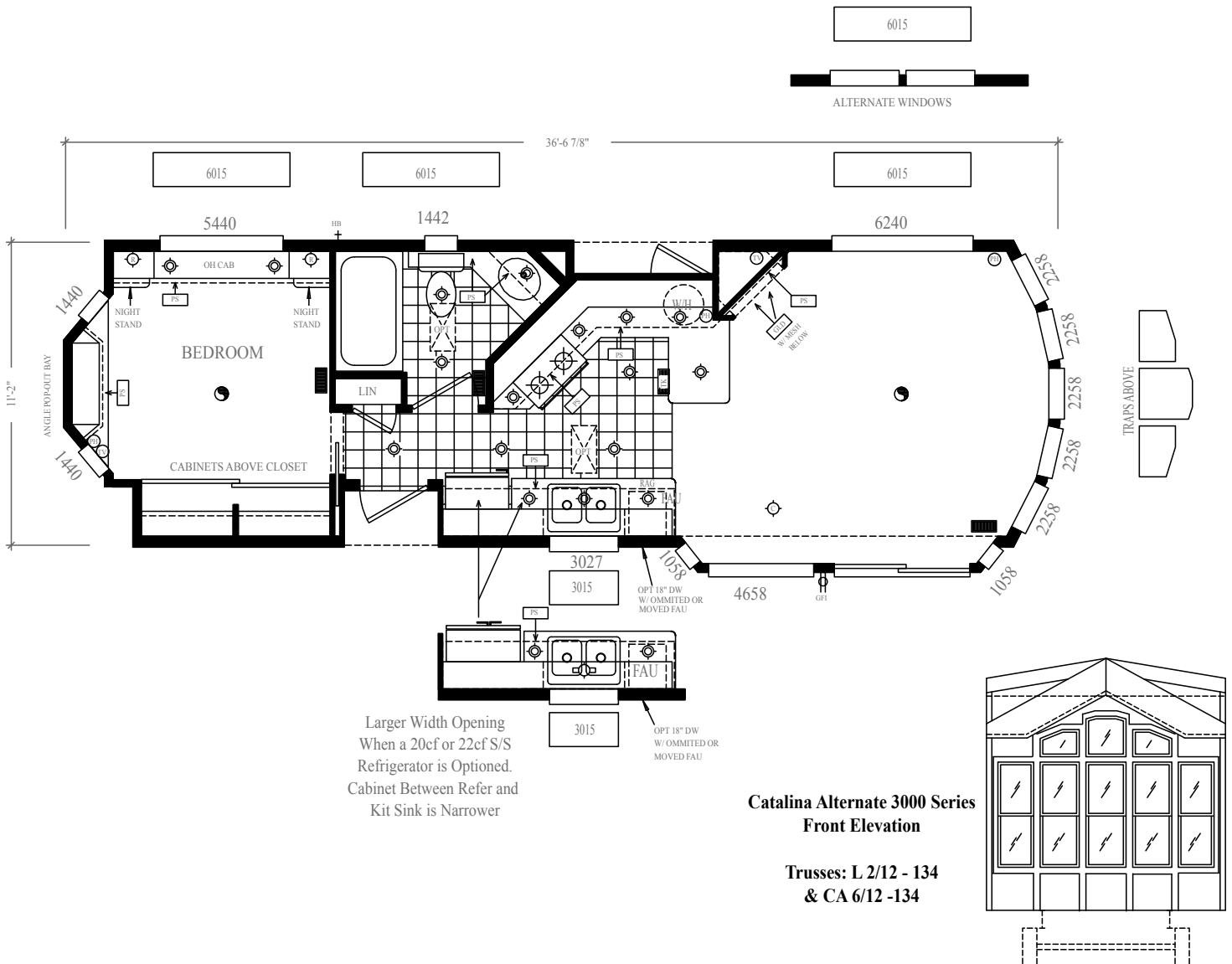
Catalina Alternate 3000 Series  
Front Elevation

Trusses: L 2/12 - 142  
& CA 6/12 - 134

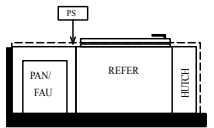
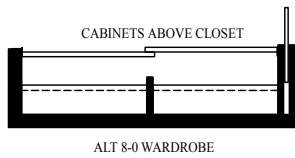
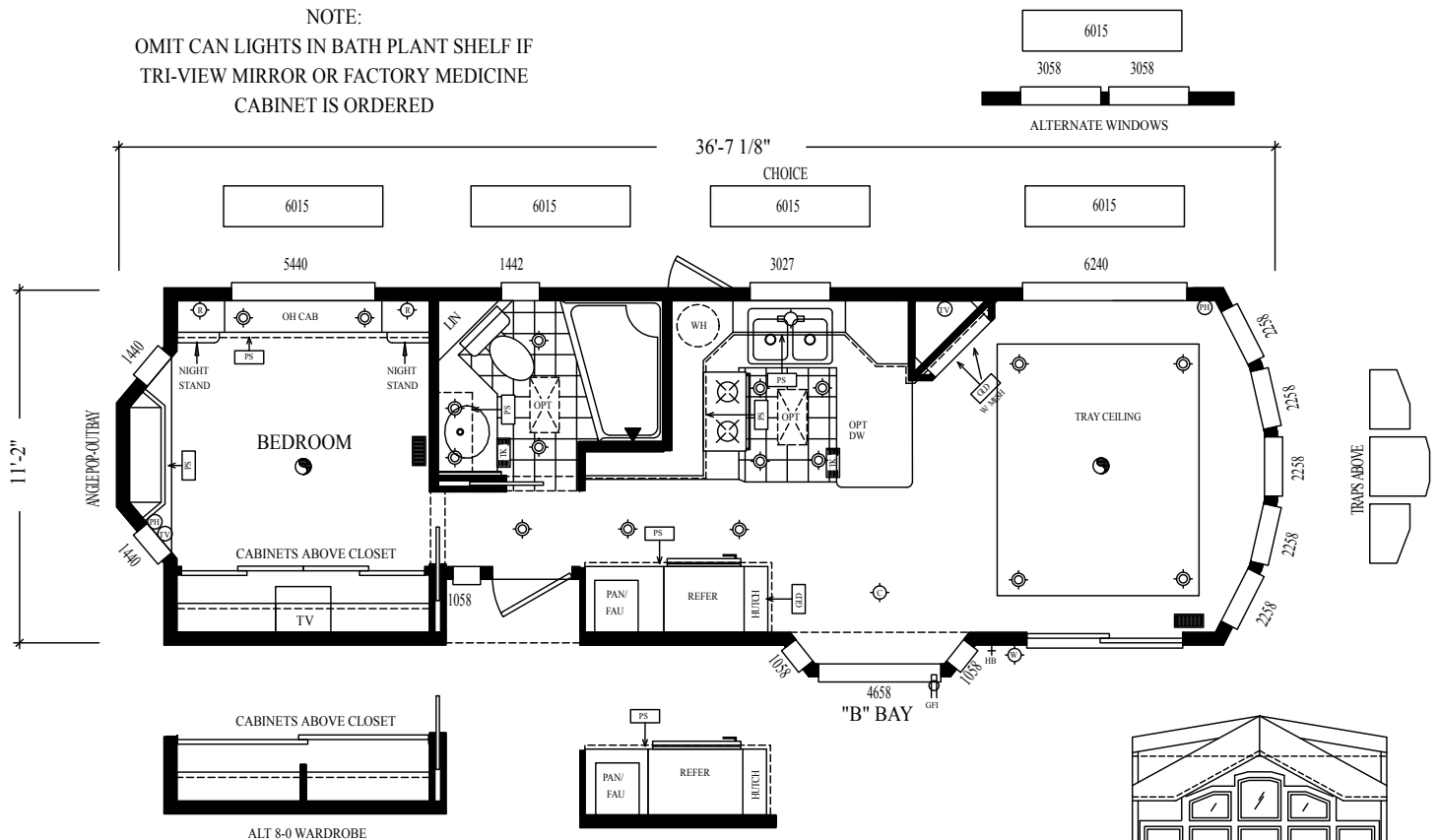




# C-30002-A

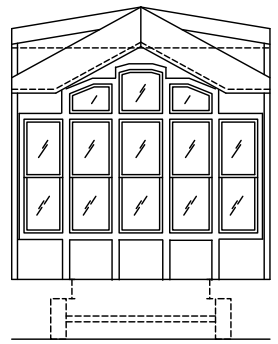


NOTE:  
OMIT CAN LIGHTS IN BATH PLANT SHELF IF  
TRI-VIEW MIRROR OR FACTORY MEDICINE  
CABINET IS ORDERED



Catalina Alternate 3000 Series  
Front Elevation

Trusses: L 2/12 - 134  
& CA 6/12 - 134



## INTERIOR

- Tape and textured walls with rounded corners throughout
- Tape and textured plant shelves and soffits (per floorplan and design)
- 9'6" flat ceilings throughout with stack windows
- Custom TV cabinet with smoked glass/mesh cabinet doors (per floorplan)
- White 2-panel interior passage & pocket doors w/ heavy duty hardware
- Wood Valances in livingroom with mini blinds
- Shaw upgrade carpeting with padding and tack strip
- High grade Congoleum linoleum in kitchen and bathroom
- Choice of interior paint color on walls and ceiling (two tone opt)
- Bays in livingroom, diningroom, kitchen and bedroom (per floorplan)
- Choice of dining room hutch with choice of hutch glass
- Upgrade lighting package
- Smoke detector
- Fire extinguisher
- LP Leak Gas Detector

## KITCHEN

- General Electric 30" deluxe gas range
- General Electric 16.8 cu. ft. double door frost free refrigerator
- General Electric Spacesaver Microwave Oven
- Choice of 30" or 39" Raised panel hardwood cabinet doors and face frames
- Adjustable double shelves in throughout overheads
- Drawers with double steel roller guides
- Laminate countertops with ceramic tile edging and backsplashes throughout
- Satin finish single lever pull-out kitchen faucet
- Extra large composite kitchen sink
- Concealed cabinet door hinges
- Matching woodgrain overhead cabinet interiors
- Cultured marble window sill in kitchen (per plan)
- Corner lazy susan in kitchen (per plan)

## BATHROOM

- Lasco fiberglass one piece tub/shower with satin shower doors
- Satin finish single lever lavy faucet
- Satin finish single lever tub diverter with shower head
- Satin towel bar and tissue holder
- Choice of medicine cabinet (per plan)
- Mirror over lavy cabinet (per plan)
- Solid surface countertop and backsplash with marble lavy drop-in
- Linen storage cabinet (per plan)
- Drawer bank in bath lavy (per plan)

## BEDROOM

- Full width wardrobe with mirrored sliding doors
- Single drawers below wardrobe
- Cabinet door storage over wardrobe
- Dresser with overhead cabinet (per floorplan)
- 54" x 40" egress window
- Complete tape and texture wardrobe interiors
- Overhead Cabinets on Wall
- 2-Upgrade night stands w/ reading lights above

## EXTERIOR

- 5-window front bay with windows above
- 30-year architectural shingled roof
- 9" Cemplank horizontal exterior siding w/wood and building wrap
- Rear door with window, internal mini blind and deadbolt
- Upgraded exterior lights at each door
- White low "E" vinyl framed dual glaze windows
- White aluminum framed dual glaze sliding glass
- Front eave overhang
- Exterior GFI receptacle by sliding glass door

## PLUMBING, ELECTRICAL, HEATING & INSULATION

- PEX waterlines with low point drain
- U.L. approved electrical devices throughout
- 50 amp exterior main panel service with supply cord
- 30 gallon fast recovery electric water heater w/exterior door
- Easy touch rocker light switches throughout
- 40,000 BTU propane furnace with auto ignition
- R-14 fiberglass floor insulation
- R-11 fiberglass sidewall insulation
- R-33 cellulose blown insulation
- Black iron gas pipe run to front hitch end
- Aluminum heat ducting with coordinated floor registers
- Toe-kick registers (per floorplan and design)
- Under sink waterline shut-off valves
- Exterior water heater door on 30 gallon electric water heater
- Interior water heater switch on 30 gallon electric water heater
- Pre-wire for ceiling fan in living room and bedroom
- Pre-wire for TV and phone jacks in living room and bedroom
- Dimmer switch in dining room
- Lighting in bathroom
- 5-Light upgrade chandelier
- DVD surround sound system with HDMI cable

## CONSTRUCTION

- Full I-beam chassis construction
- Transverse 2" x 6" Floor Joists
- Detachable hitch from main chassis
- Woven simplex underbelly material
- 8' x 12' high density floor decking
- 2" x 4" sidewalls 16" O.C.
- Pre-engineered scissor trusses 16" O.C.
- 30 gauge steel strapping for truss to sidewall and floor to sidewall strength
- RPTIA approved
- ANSI approved
- NTA "GREEN" approved

