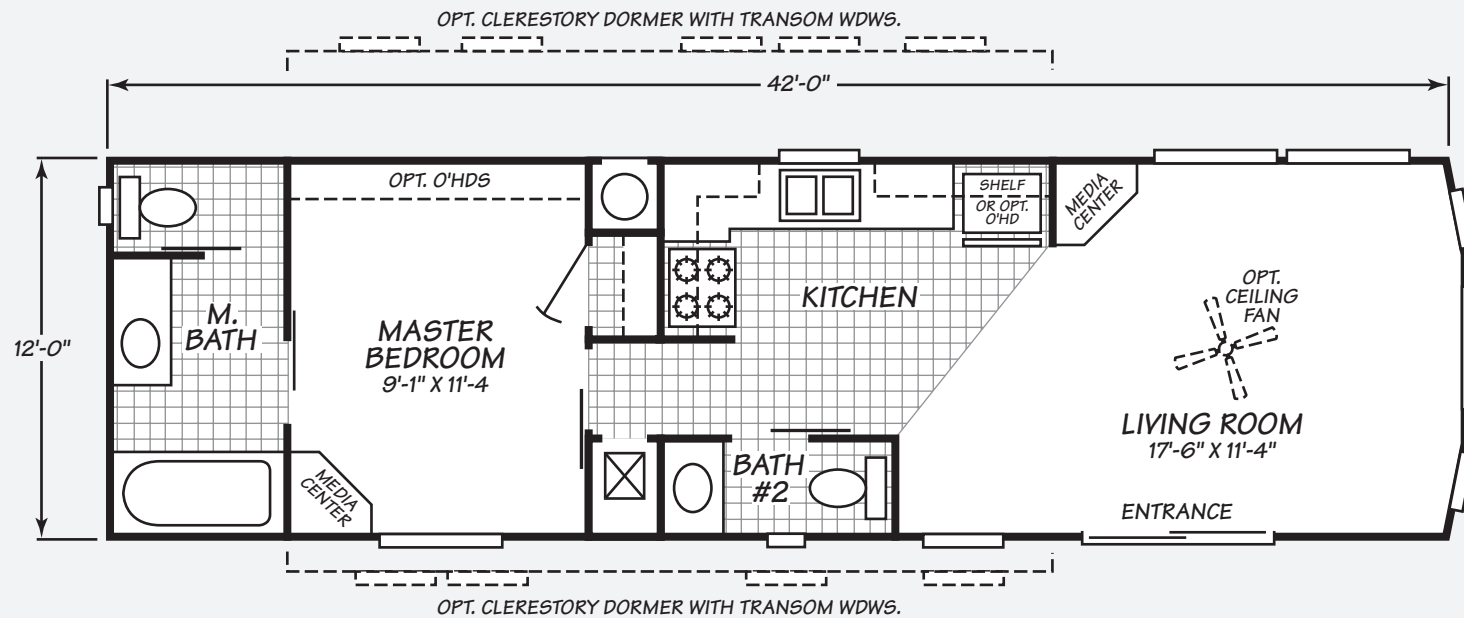




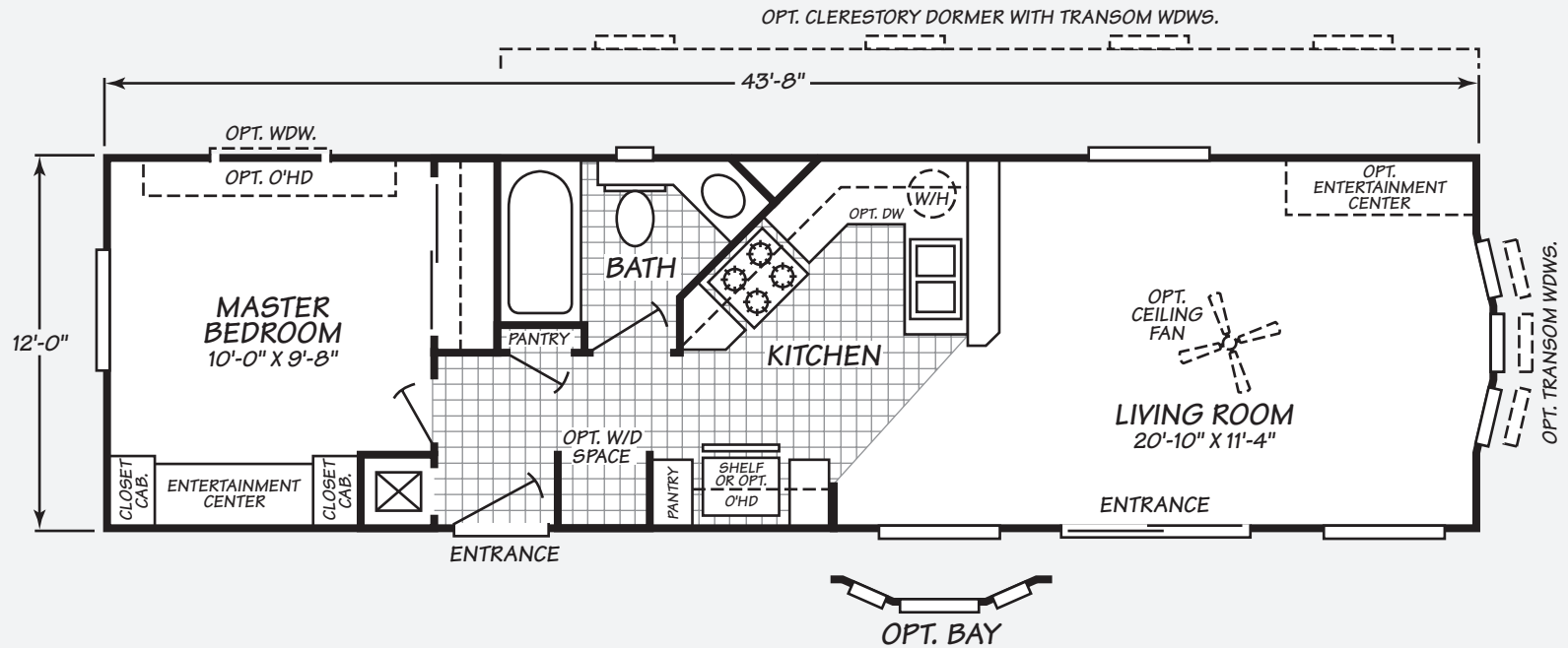
# GREAT NORTH SERIES

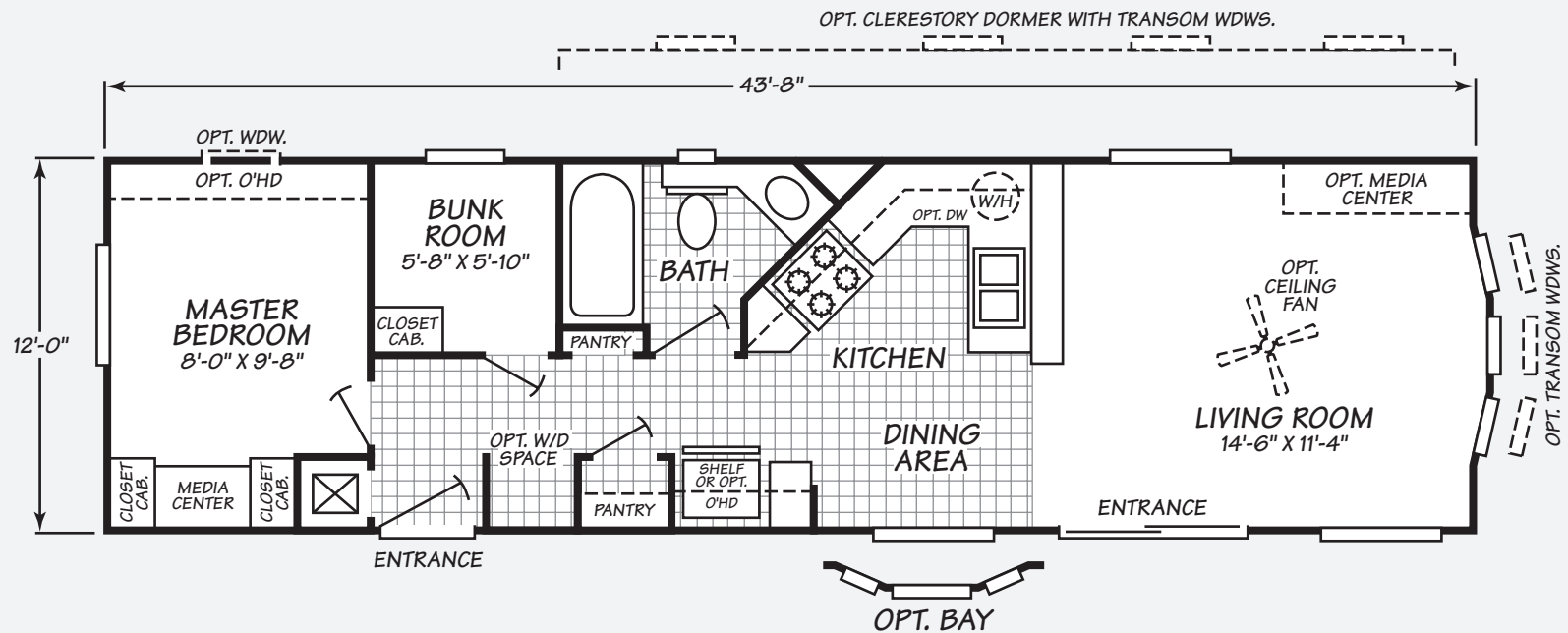
MODEL: 1421A

1 BEDROOM | 1 BATH | 513 SQUARE FEET



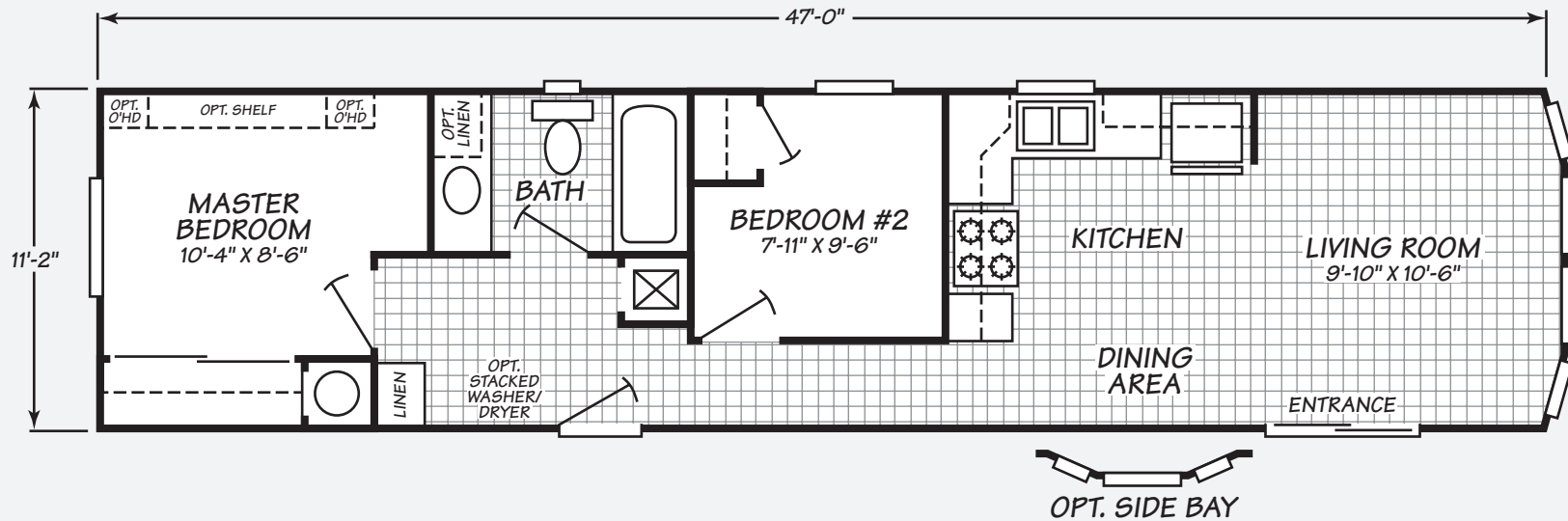
WOODBURN, OREGON







**GREAT NORTH SERIES**  
**MODEL: 1482C**  
**2 BEDROOMS | 1 BATH | 534 SQUARE FEET**

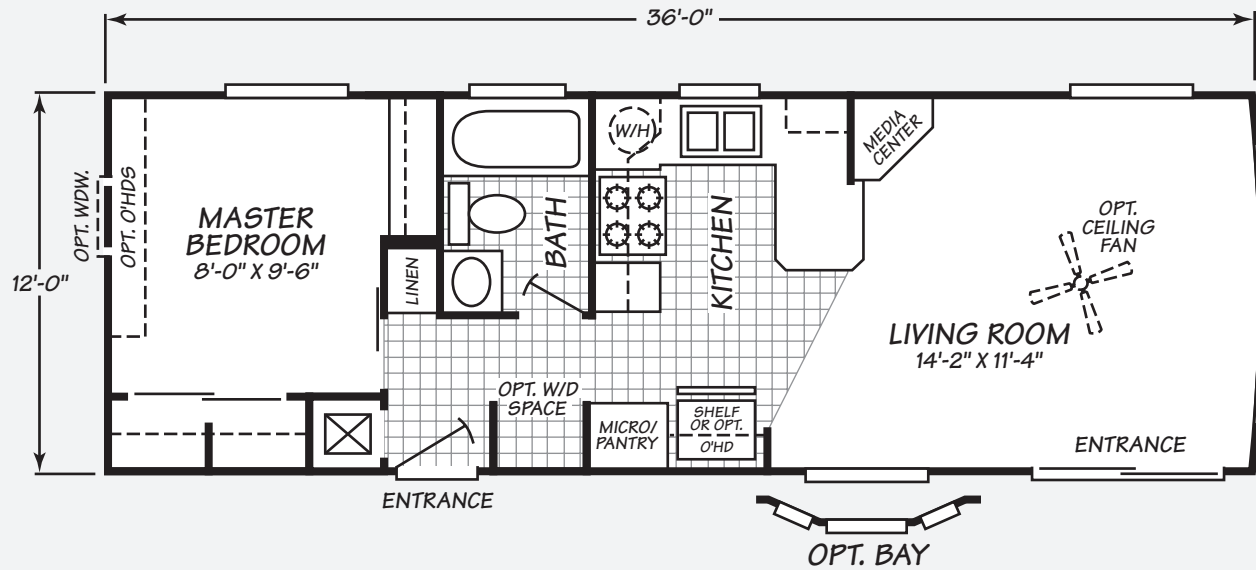




# GREAT NORTH SERIES

MODEL: 1361A

1 BEDROOM | 1 BATH | 438 SQUARE FEET





# GREAT NORTH SERIES

## STANDARD FEATURES

### INTERIOR

- Decorative Wrapped Gypsum Wall Panels – Enhance your decor with professionally designed looks
- Ceiling Fan Pre-Wiring in Living Room – Easier installation for any aftermarket fan
- Decorative Glass Light Fixtures – Durable and attractive, adds an appealing detail to room lighting
- 24 oz. Carpet by Shaw with 6 Lb. Pad – High performance carpet in a wide variety of color choices
- Cable/Phone Jack – Convenient access for cable and/or phone installation
- Solid Wood Shelving & Clothes Hanger Rod – Stronger shelving and more upscale closet interior
- Mirrored Wardrobe Doors – Dual purpose closet doors visibly increase the size of the bedroom
- Bedroom Night Stands – Custom made to match your cabinets and includes reading lights above your bed
- Beadboard Char Rail Accents – Appealing detail enhances home appearance
- Congoleum® Floor Covering – Nothing cleans easier than Legacy Plus with built-in stain and soil repellency in your kitchen and bath

### EXTERIOR

- 2"x 4" Exterior Wall Frames, 16" on Center – Superior structural strength – the standard in residential construction
- 5/8" Floor Decking – Structurally strong, warp resistant flooring is glued and fastened for maximum stability
- Class A Fire Rated 30 Year Architectural Shingles – Low maintenance, long lasting performance
- Transverse Floor System – More lumber than a longitudinal floor and allows in-floor plumbing
- 80# Roof Load with 6/12 Pitch – Designed to add both structural needs for Canada and exterior appeal

- 32"x 80" 2-Lite Steel in- Swing Rear Door with Dead bolt – Durable, attractive entry provides additional security and more natural light
- Sliding Glass Living Room Door – For access to your porch while adding an abundance of light
- Vinyl Lap Siding – Attractive and low maintenance
- 7/16" OSB Structural Sheathing – Provides added structural support and protection for harsh Canadian weather

### BATH

- 36" High Counter tops in Master Bathroom – Designed for convenience and comfort
- Daltile® Backsplash For Vanity – Ceramic tile backsplash protects walls and adds designer details
- Hollywood Light Fixture Above Vanity in Master Bath – Flattering light source illuminates vanity mirror
- Mirrors above Sinks – Designer home detail offers head to toe reflections
- Towel Bar & Tissue Holders – Ready to move in with the convenience of towel and tissue placements
- Exhaust Fan – Circulates air and reduces moisture
- 54" Fiberglass Tub/ Shower in Master Bath – Durable, attractive, and easy to clean
- China Sink with Single Lever Faucet – Durable and attractive with superior performance and ease of control

### KITCHEN

- Built-in Microwave Oven by Whirlpool® (Standard on Select Models Only) – Conveniently located and saves counter space
- Cityscape Cabinets with Crown Molding – Spacious, durable, and appealing design with a custom kitchen style
- Lined Overhead Cabinets with Adjustable Shelves – Aesthetically pleasing and adjustable shelf creates additional cabinet

- space
- Drawer Bank with Large Bottom Drawer – Efficient design enhances storage
- Shelf Over Refrigerator – Provides additional storage
- Daltile® Backsplash – Ceramic tile backsplash protects walls and adds designer details
- 7" Stainless Steel Double Sink – Contemporary look, resists chips and stains
- Single Lever Faucet with Pull-Out Sprayer – Refined single lever faucet fixtures are attractive and easier to use
- Recessed Can Lighting – Designer detail enhances kitchen lighting
- Hardwood Cabinet Doors and Stiles – Your choice of two cabinet colors with hidden hinges

### UTILITIES, SAFETY & ENERGY

- Dual Pane Low-E Vinyl Windows – Easy to clean, and low maintenance helps provide an energy efficient home
- Whole House Shut-Off Valves – Quickly shut off water and gas for repairs or in an emergency
- Whole House Ventilation System – Reduces moisture and improves air flow
- R-34 Roof Insulation, R-12 Wall Insulation, R-23 Floor Insulation – Roof, exterior wall, and under-home insulation keeps home comfortable and helps lower utility bills
- In-floor Plumbing – Plumbing and drain lines are in-floor and not exposed to the cold.
- Rheem® 20 Gallon Electric Water Heater – Abundant hot water supply for laundry, bath, and kitchen
- 46,000 BTU Coleman® Gas Furnace – Provides worry free and efficient heating supply for your home
- 50 Amp Electrical Panel Box – Designed and installed for safety, easy access and ample household capacity

### POPULAR OPTIONS

- Dishwasher by Whirlpool® and/ or Garbage Disposal – Helps with easy kitchen clean-up
- Side Angle Bay Window – Create a larger dining area and enhance the exterior appeal (on select models)
- 2"x 6" Exterior Walls with R-19 – Increased insulation and structural strength for year round weather
- Entertainment System – Media center with 26" flat screen LCD TV, DVD player with Surround Sound
- Day/Night Shades – Tasteful decorator look provides ability to adjust light and privacy throughout the day and evening
- Daltile® Bullnose Ceramic Edge – Ceramic tile edging protects surfaces and adds designer details
- Pentazoid Front Windows – Adds curb appeal and abundance of light to living area (on select models)
- Electric Fireplace – Perfectly sized fireplace brings warmth and ambiance to your living room
- Furniture Package – Your home is ready to move in today with your choice of custom selected furniture and decor
- Clerestory Dormer – Create a taller ceiling with additional height and windows to your home

IMPORTANT: Because we continuously update and modify Cavco products it is important for you to know that our brochures and literature are for illustrative purposes only. All information contained herein may vary from the actual home we build. Dimensions are nominal and length and width measurements are from exterior wall to exterior wall. The right is reserved to make changes at any time, without notice or obligation, in prices, colors, materials, specifications, features and models. Please check with your retailer for specific information about the home you select. (Add approximately four feet to determine transportable length.) ©2010 Cavco Industries, Inc. | All Rights Reserved

**YOUR CAVCO RETAILER:**  
Call Park Model Homes  
Your Great North Wholesaler  
(888) 222-2699

