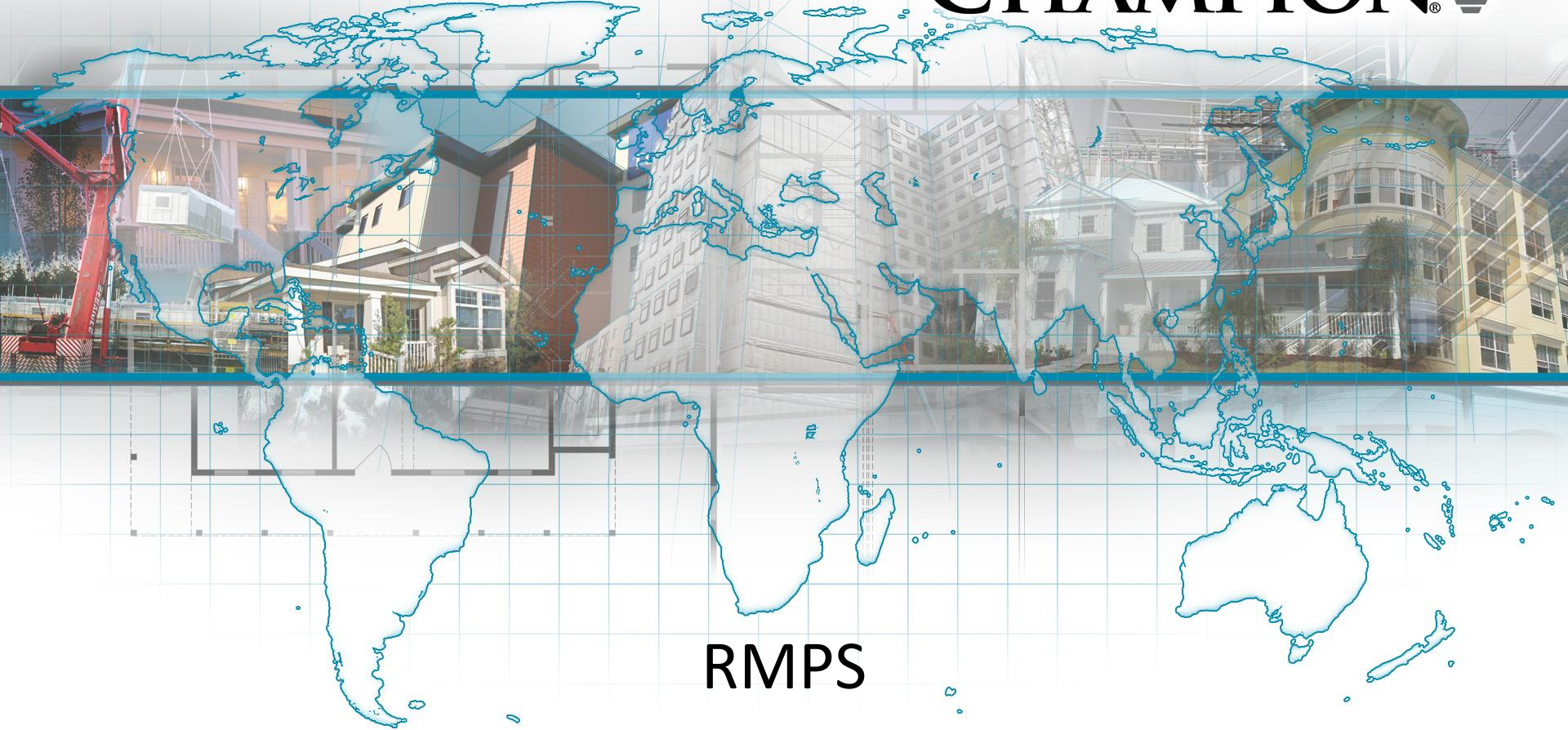


Contact Park Model Homes
(866) 222-2699

CHAMPION 



RMPS

Relocatable Multi Purpose Structures

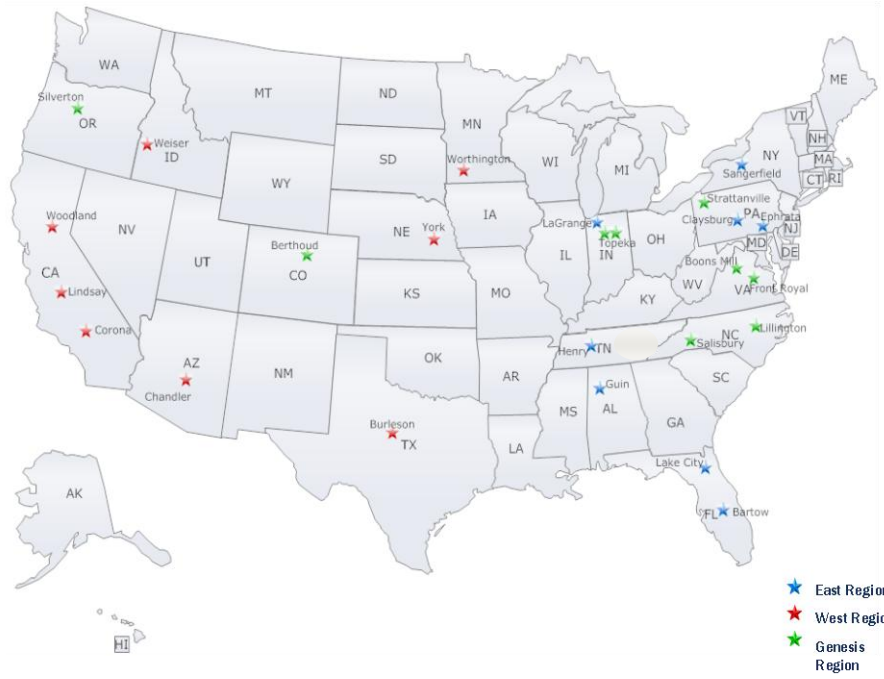
We Thought You May Want To Know...

- Who Is Champion?
 - How does Champion Differentiate Itself as Relates to Project Business?
 - How has Champion's Strategy been Effective?
 - Concept, Typical Plan, Structure, Features, Future Use, and Customization
 - How will Champion Respond to Housing Needs Effectively?



Who is Champion?

• Recognized as a leader in the manufactured housing industry, Champion was founded 55 years ago as a single manufacturing facility in a small town in rural Michigan. Champion is now a privately held company since 2010.



• Our international headquarters remains in Michigan, and currently, with 27 manufacturing facilities located throughout North America and Europe, we employ more than 4,000 dedicated employees worldwide.



Military Housing – Fort Lewis Duplexes

We have grown to become a “family of builders” providing factory-built housing and other commercial structures throughout the United States, Western Canada and United Kingdom

Who is Champion?

- Through the merger of its Commercial Solutions and Corporate Engineering Teams', it continues to diversify and focus on to the housing needs in all segments of the world.
- This combined Teams' sharper focus and national perspective allows for programmatic approaches to regional and national commercial opportunities that previously were difficult to implement at the local manufacturing level.
- This Team's national perspective enables us to "connect the dots" and align all of the Champion resources efficiently and effectively for our customers.

Relocatable Barracks – Fort Bragg, North Carolina



Mixed Use – Dayton, Ohio

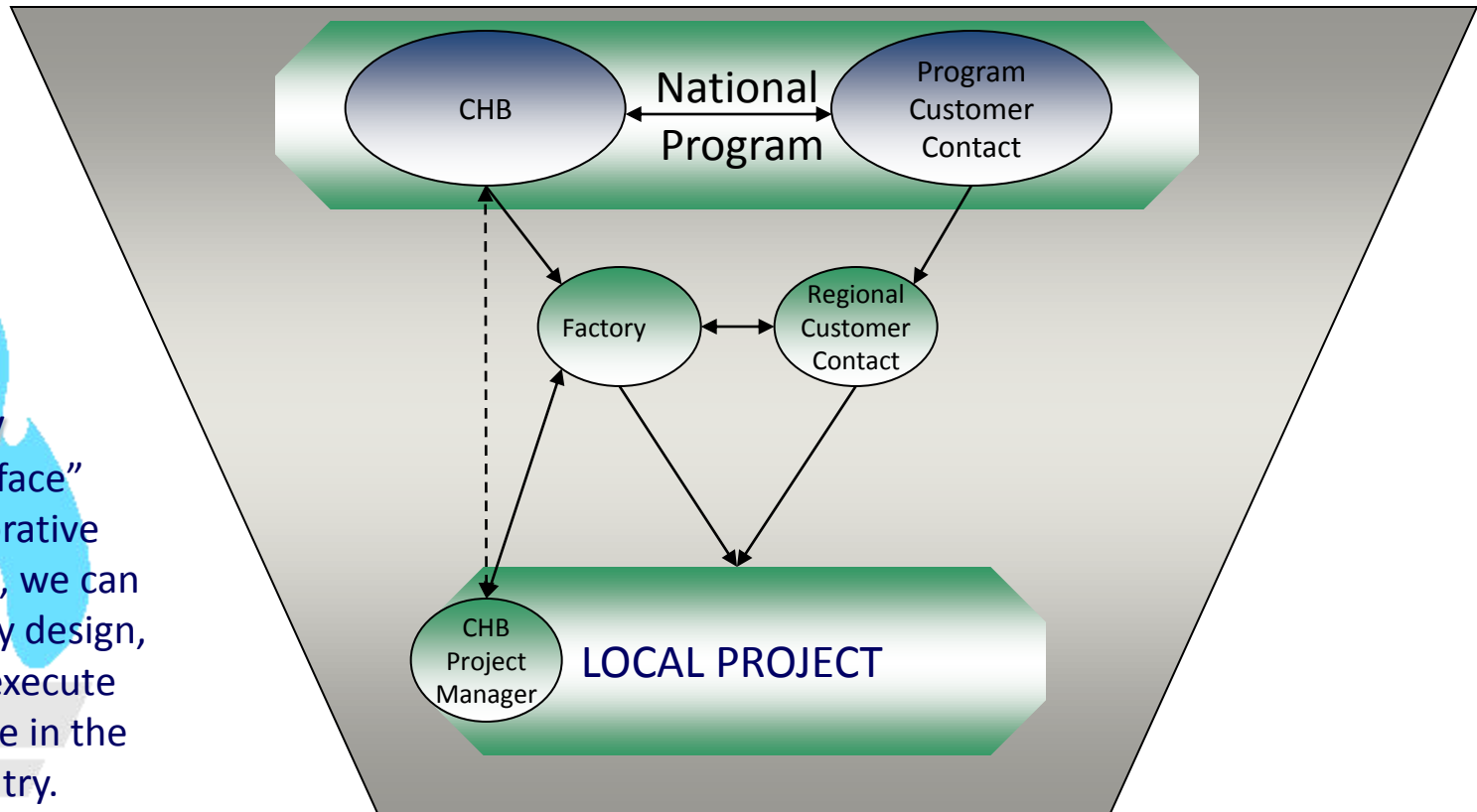


Expanding our presence in the domestic commercial marketplace

How Does Champion Differentiate Itself?

Project Business Structure...

✓ Strategy
“One-face”
collaborative
approach, we can
seamlessly design,
plan & execute
anywhere in the
country.

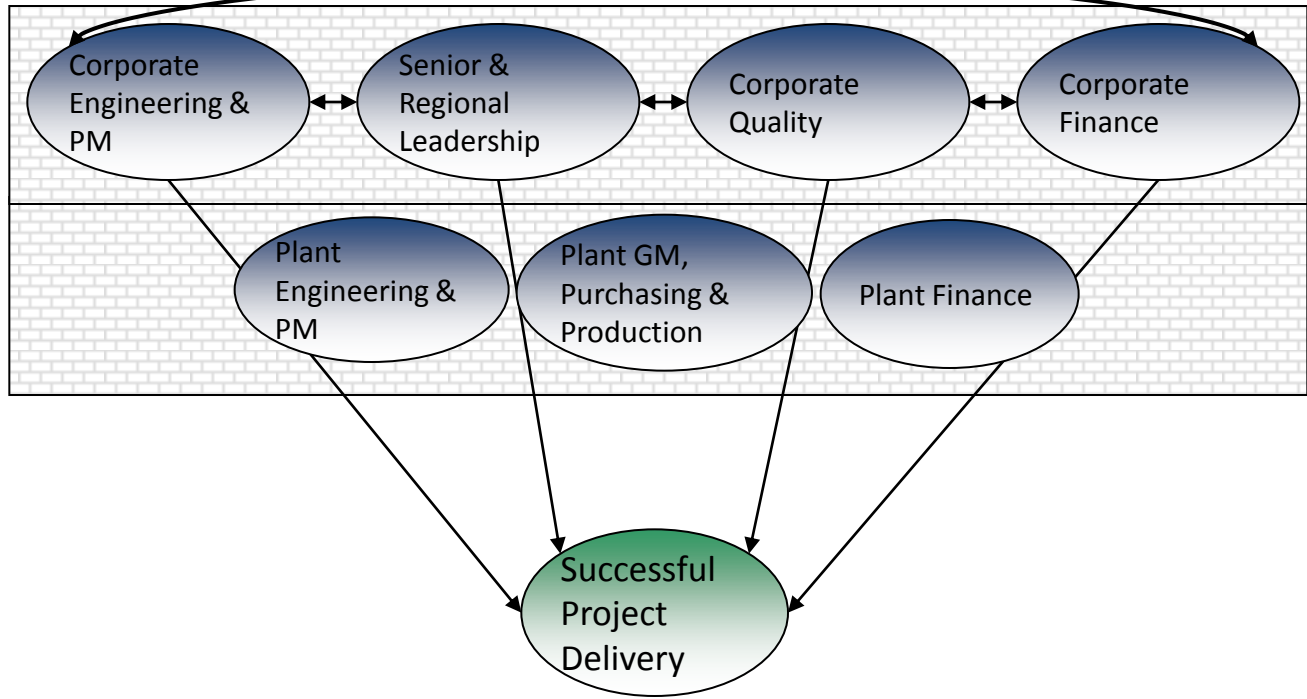


Repeatable & reliable programmatic solutions anywhere in the country.

How Does Champion Differentiate Itself?

A True Partner...

Collaborative team approach from design to delivery



✓ Expertise
Dedicated local & national teams committed to ensuring projects are delivered on time & on budget.

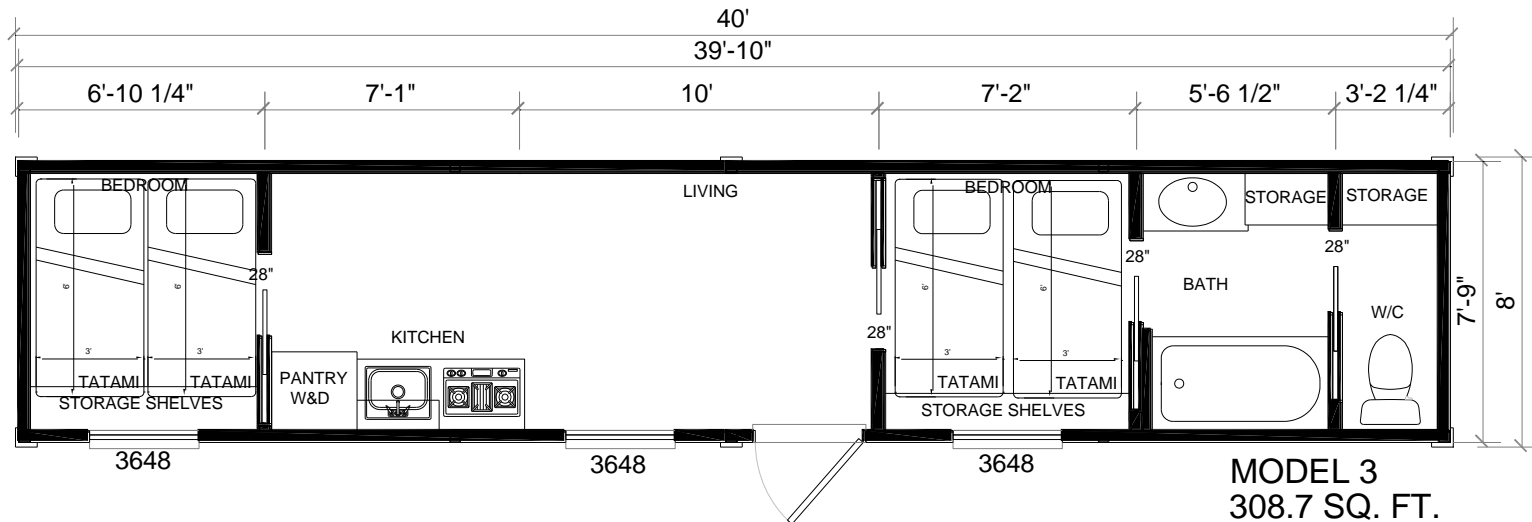
Repeatable & reliable programmatic solutions anywhere in the country.

Concept

The RMPS is designed as a multi purpose structure that has the capability to be reused with little or no modification. The basic structure is built to ISO Container standards to include shipping dimensions and seismic. Currently the structure is designed to stack in a three story configuration. It is shipped overseas in a container ship and transported to the building site using standard container transporters. Upon arriving at the building site it is lifted on to the concrete piling foundation using small container cranes.



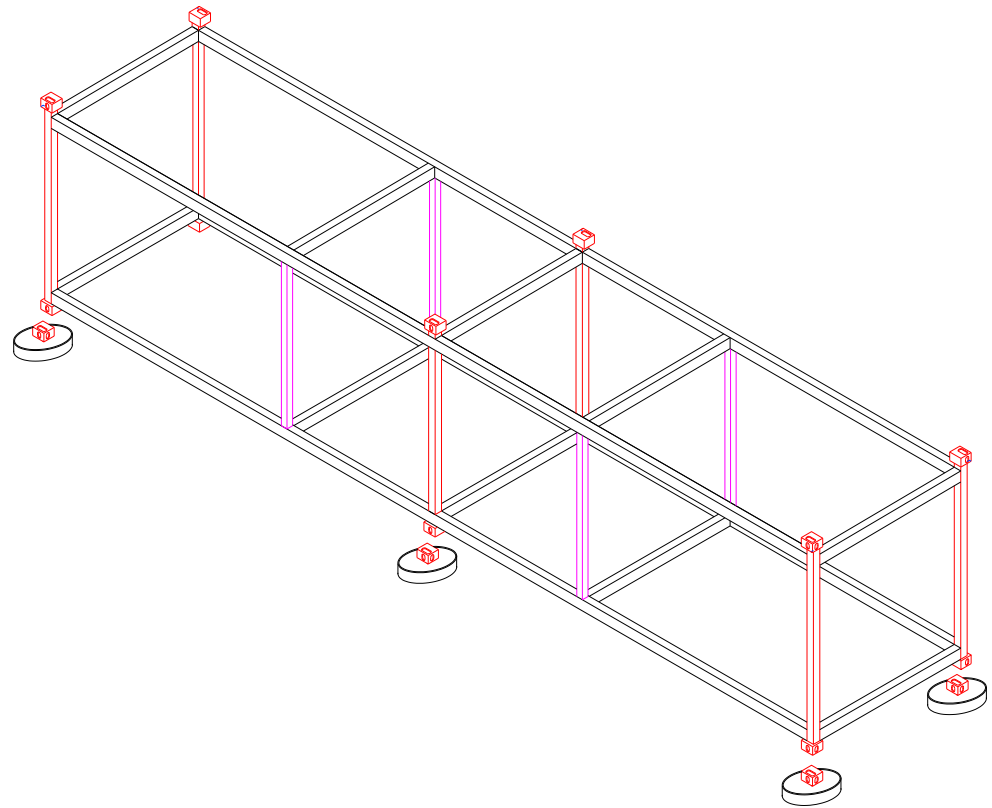
Typical Plan



The typical plan is a 8'x40' footprint, it can be a basic shell with no interior walls or amenities to a fully functional home with a kitchen, sleeping areas, and bathroom

Structure

- Tubular Steel Frame
- ISO fittings at each corner and middle columns (top and bottom)
- Foundation is round concrete pilings with embedded ISO corner fittings
- Secured to foundation with ISO double cone two position twist lock
- Secured to upper RMPS with ISO double cone two position twist lock



Typical Plan Features

- Six pick (lifting) points per structure with standard ISO Container corner fittings (ISO 1161 certified), roof and floor.
- Shipping dimensions are in accordance with 1.3.1 ISO Container standards.
- The exterior walls are recessed from the pick point columns to allow for exterior siding and trim.
- Vinyl siding and windows.
- EDPM roofing with a 1/4" sloped roof.
- Designed to be more durable than a typical emergency temporary shelter. It can be reused as is or combined with additional units to make a larger custom home.
- Stack three high on the building site but must be the top three units on a ship during shipment, standard shipping containers cannot be stacked on these homes.
- Raised floor to allow lifting by fork lift.
- When installed in a multi story configuration the connection from ceiling to floor is a standard double cone two position twist lock.
- The foundation is a standard ISO Container corner fitting (ISO 1161 certified) embedded into a round concrete piling. The structure is then secured to the foundation corner fitting and the structure floor corner fitting with a double cone two position twist lock.
- 50hz electrical system.
- Combination washer and dryer area with pantry above.
- Single sink and Japanese style cooking appliance.
- Storage and shelving areas for bedding.

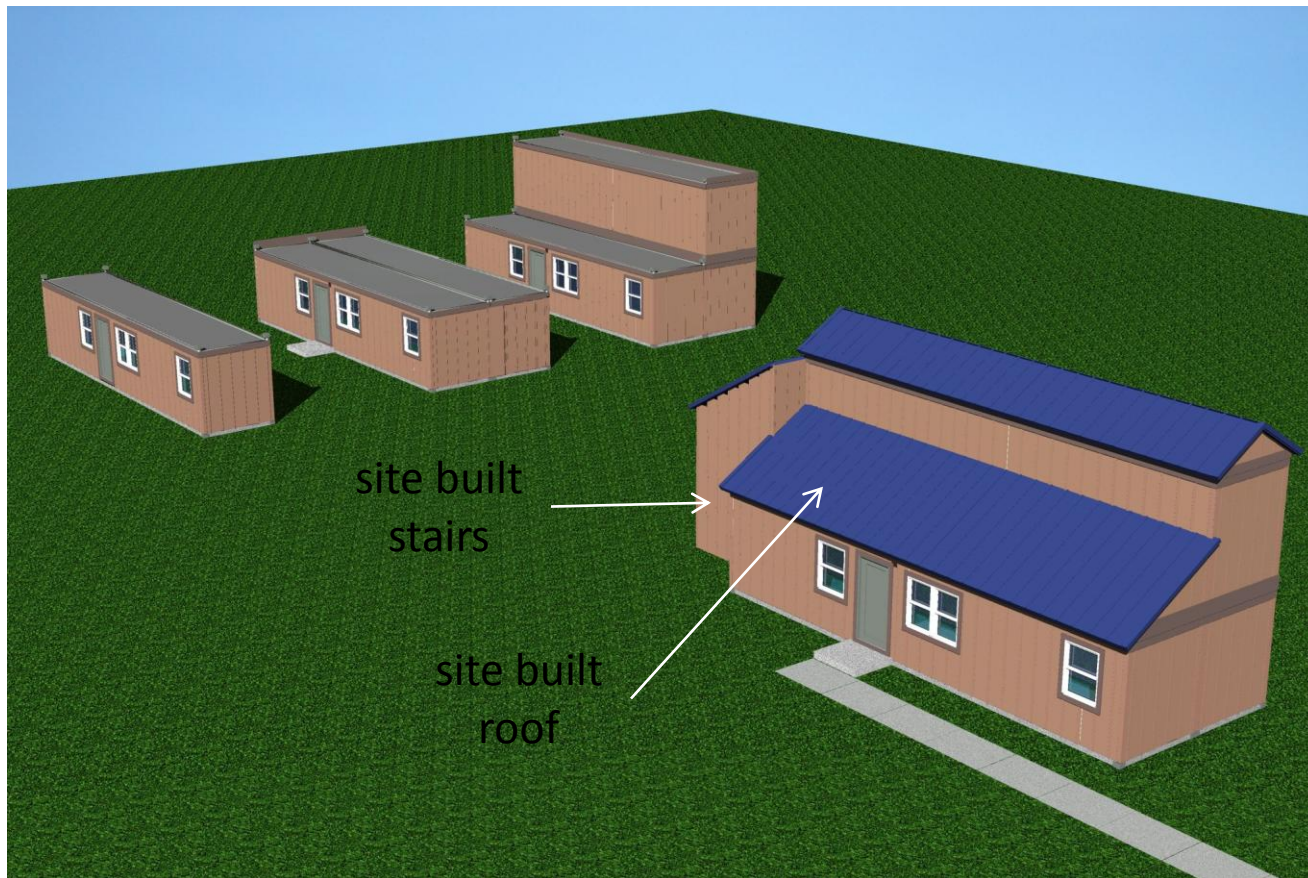
Future Uses

- Schools
- Student Housing
- Custom Permanent Homes
- Stored for future disasters
- Sold to other countries for their housing needs

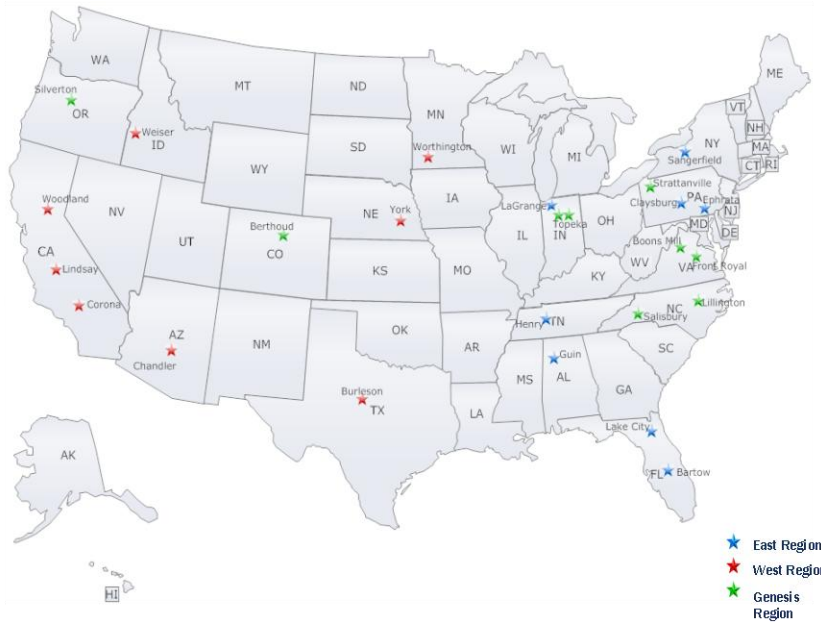


Customization

Stack 3 RPMS can be stacked together with a site built stairs and roof for a total of 1022 sq.ft.



Meeting Housing Needs



- Champion has production facilities located near shipping ports.
- Company wide Quality Assurance program allows for product consistency.
- Company wide buying power to lower cost.
- Ramp up idle facilities to increase production.
- Each U.S. facility (17) can build 20-40 units per week, once ramped up and orders to sustain these levels.